

KTH TOUCHLESS FOOT SWITCH

- Only needs to approach, realizing secure detection.
- By touchless the Foot Switch, door open and close.
- Suitable for use in CLEAN ROOM, HOSPITAL, OPERATION ROOM...etc..



Foot Switch
(RED: Detection Active)



Foot Switch (BLUE : Standby)

FUNCTION AND FEATURE

- Touchless detection
- Easy and simple to install.

TECHNOLOGICAL DETAILS

INSPECTION METHOD	Conductor Inductance
INDUCTANCE METHOD	Touchless
RECEIVER'S POWER	80V ~250V
OUTPUT CONNECTION	Open Door Signal Connection(NO) 220V 10A、110V 12A
WORKING ENVIRONMENT	-20°C~+50°C
RELAY HOLD TIME	1.5 sec.
OPERATION INDICATOR	BLUE : Stand by, RED: Detection Active. (send out Open Door Signal)
SIZE	Leader : 150×68×50(mm) ; 0.28kg Foot Switch : 200×170×68(mm) ; 0.72kg /piece3 pieces(max.)

The specifications herein are subject to change without prior notice due to improvements.



KTH LAVATORY SYSTEM FOR DISABLED PEOPLE

It is Lavatory System for Disabled People Simple control as riding on a wheelchair. Pursuit of easiness and safety.



LH-900A

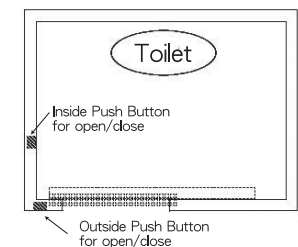
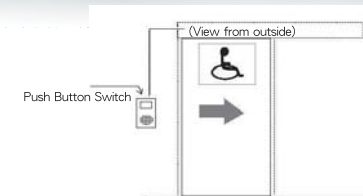
FEATURE OF PRODUCTS

The system has been developed mainly for easy use by disabled people as riding on the wheelchair. We have studied from various viewpoints easy use such as with smooth access and operation by pushing the button switch.

TECHNOLOGICAL DETAILS

- POWER: 80V~250V±10
- POWER CONSUMPTION: 8 W (max.)
- HOLD OPEN TIME: 1~9 sec. to Limitless
- WORKING ENVIRONMENT: -20°C to +50°C
- ADDITION FUNCTION:
 - 1.Can connect the lamp and fan
 - 2.Emergency button
 - 3.Emergency Key (for open door)
- MAINFRAME SYSTEM : 18.3×6.4×4.6(cm) Net: 0.4kg
- OUTSIDE DEVICE : 23×10×6.7 (cm) Net: 1.4kg
- INSIDE DEVICE : 23×10×6.8 (cm) Net: 1.5kg
- ACCESSORIES: cable×4 , Key×1

The specifications herein are subject to change without prior notice due to improvements.



KTH KING TA HAN TECHNOLOGY CO., LTD.

LOCATION : KAOHSIUNG, TAIWAN Global Website : <http://www.kth-automaticdoor.com> E-mail address : export@kthtw.com kth@kthtw.com